



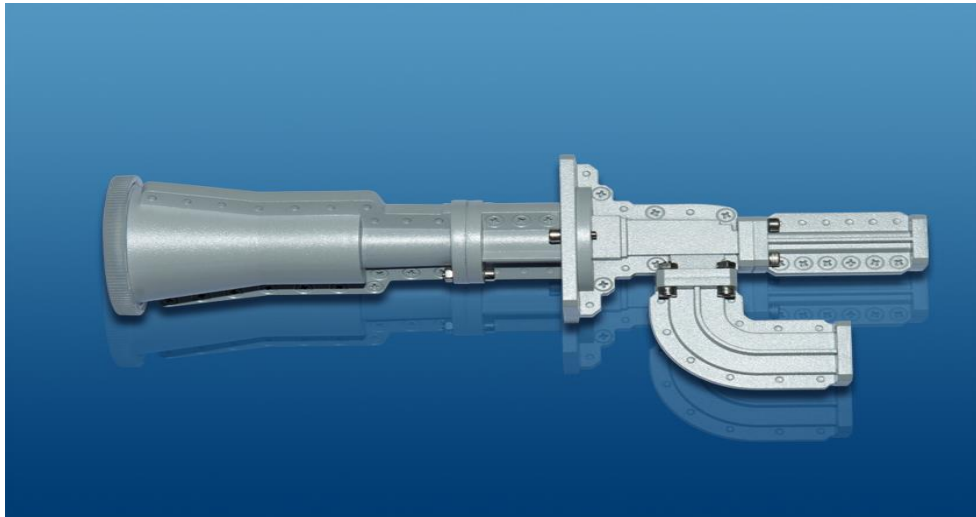
		60cm
TX&RX		36.9dBi 36.2dBi
(
	TX 14.00—14.50GHz	RX 12.25—12.75GHz
		≤1.3
		35dB
		≥85dB
		≤-14dB
		WR75 Flat
		360°
		0°~ 90°
		-25°C ~ 55°C (-13°F ~ 131°F)
		-40°C ~ 80°C (-40°F ~ 176°F)
		0% ~ 100% ()
		≤13m/s

Ku

Ka

RxTx

OMT



	19.2-20.2 GHz	29.5-30 GHz
	1.3:1	1.3:1
	>85 dB	>90 dB
	<0.5 dB	<0.3 dB
	1.5 dB	1.0 dB
	WR42 Flat	WR28 Flat

Ka

Ka

RxTx

OMT

12.25-12.75 GHz	14.00-14.50GHz
1.3:1	1.2:1
>60 dB	>85 dB
<0.5 dB	<0.3 dB
30dB	30dB
WR75 Flat	WR75 Flat